

Interpon®

Powder Coatings



Interpon D610



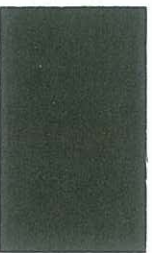
Bronze Global Warranty

*Conditions Apply (Please See Below)

Vivica™ PEARLESCCENT RANGE



Vivica™ Charcoal Metallic
Gloss MM019A



Vivica™ Anodic Bronze
Satin MY125A PCS25



Vivica™ Azurite Copper
Matt MF248A



Vivica™ Black Onyx
Gloss MY042A



Vivica™ Anodic Natural
Matt MY235A



Vivica™ Anodic Clear
Matt MY221A



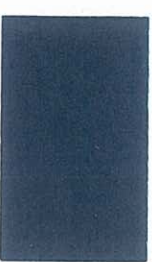
Vivica™ Ultra Silver
Gloss MY070A



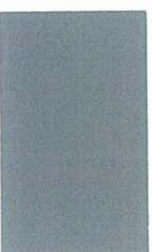
Vivica™ Axis®
Matt ML208A



Vivica™ Stormfront
Matt ML249A



Vivica™ Deep Sea
Matt ML206A



Vivica™ Palladium Silver Pearl
Satin MY184C



Vivica™ Champagne
Matt MY276A



Vivica™ Cliff®
Matt ML211A



Vivica™ Textured PEARLESCCENT RANGE



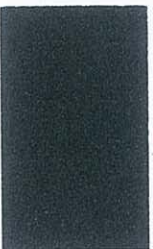
Vivica™ Cyber
ML292A



Vivica™ Brilliance
ML277A



Vivica™ Asteroid
MN271A



Vivica™ Bass
MN297A



Interpon CONTEMPORARY RANGE

Pearl White
Gloss MA078A PCS01

White
Satin MA124A PCS02

Shoji White
Satin MA160A

Bright White
Gloss MA030A PCS03

Off White
Matl MA226A

Grey Nurse
Gloss MD040A

White Birch
Gloss MA057A PCS04

Canola Cream
Gloss MA077A

Anodic Off White
Matl MD227A

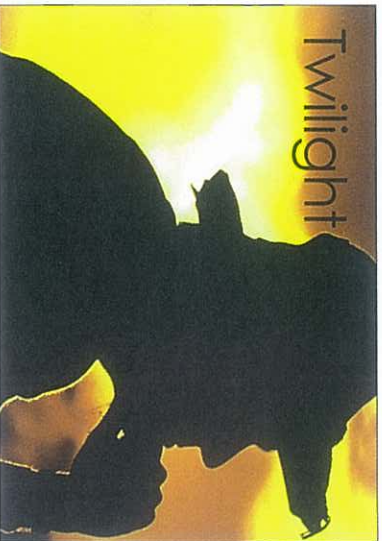
Oyster Grey
Matl ML258A PCS14

Periwinkle
Gloss ML073A

APO Grey
Satin ML183A PCS15

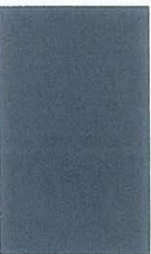
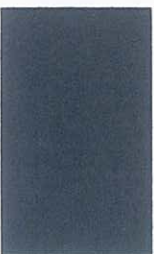
Anodic Silver Grey
Matl ML212A

Cream
Gloss MD018A



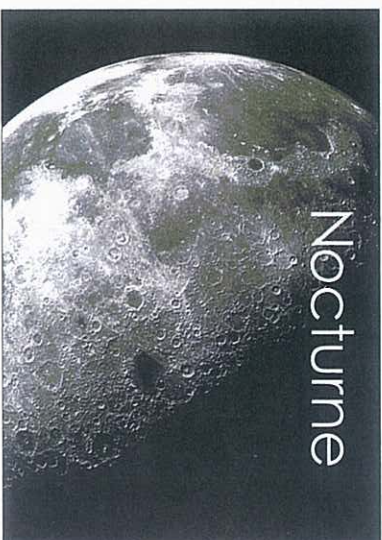
Olde Pewter
Satin ML175A PCS19

Note Dame
Gloss ML040A PCS13



Berley
Gloss MD007A

Roseberry Grey
Gloss ML015A Satin ML143A
PCS18





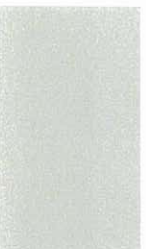
Magnolia
Gloss MD025A PCS09



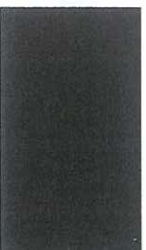
Primrose
Gloss MD037A PCS05



Doestkin
Satin MD188A PCS06



Rivergum
Gloss MD042A



Hammerley Brown
Satin MM100A PCS20



Anodic Dark Grey
Matt ML268A



Almond Ivory
Gloss MD016A PCS10



Light Grey
Gloss ML029A



Stone Beige
Matt MD247A PCS08



Pottery
Satin MM175A PCS07



Charcoal
Gloss ML035A Satin ML180A PCS16



Admiralty Grey
Gloss ML040A



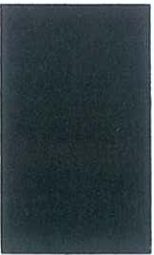
Navy
Gloss ML011A



Coral Black
Gloss MN063A PCS30



Transformer Grey
Gloss ML031A PCS12



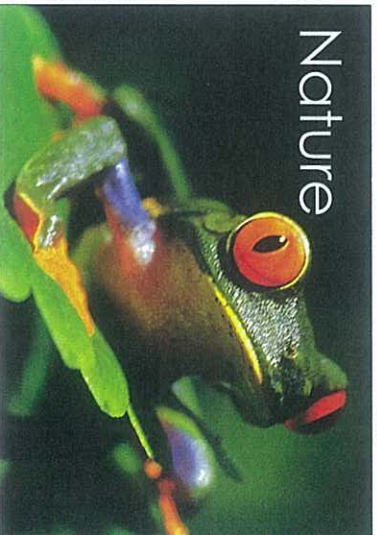
Black
Satin MN152A PCS29



Wedgewood
Satin MJ180A



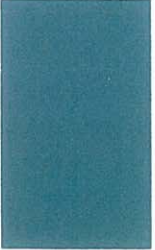
Blaze Blue
Gloss MJ034A



Nature



Deep Pool
Satin MK002A



Stromboli
Satin MK148A PCS24



Custom Black
Matt MN248A PCS28



Lemon Yellow
Gloss ME068A



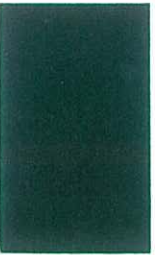
Cabana Green
Gloss MK015A



Lawn Green
Gloss MK038A



Safety Yellow
Gloss ME096A



Hawthorn Green
Gloss MK030A Satin MK161A PCS26



X15 Orange
Gloss MF035A



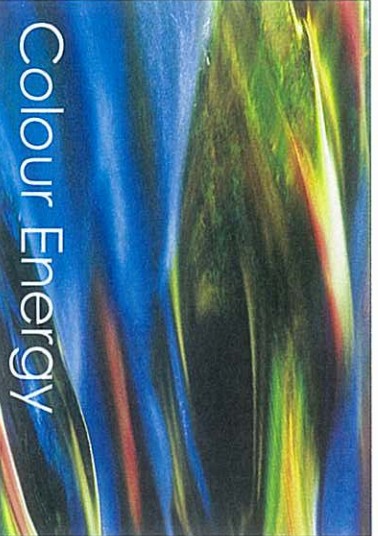
Signal Red
Gloss MG036A



Flame Red
Gloss MG071A



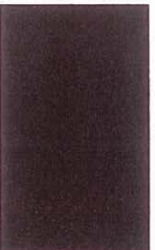
Heritage Green
Gloss MK044A



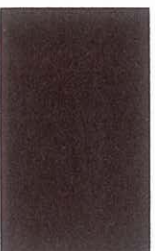
Colour Energy



Aubergine
Satin MH173A



Claret
Satin MG142A PCS22



Federation Red
Gloss MG001A PCS21

Colours displayed with this logo are not recommended for use where high Ultra Violet light exposure is likely and are not covered by the Interpon D610 Bronze Global Warranty.

Excel™ COLOBOND® steel coordinates

* Denotes COLOBOND® fencing steel coordinate • Denotes COLOBOND® steel coordinate

Colours displayed on this colour card are a guide only and have been matched as close as possible to Interpon production standards under daylight conditions. Due to the nature of the printing process some degree of colour and gloss level variation may occur. Where more than one finish is available product colour may vary. We recommend that you use production line prepped samples for final colour selection or approval.

www.interpon.com.au
www.interpon.co.nz

AKZO NOBEL

*Bronze Global Warranty conditions: Warranties are applicable only to Interpon D Approved Applicators. These applicators must apply Interpon D powder coatings over aluminum in accordance with the Interpon D Approved Applicators Manual. The Bronze global warranty is applicable only to residential and light commercial construction to a maximum of 3 levels and greater than 100 m from any saltwater or surf line. Commercial high rise is excluded. A sample copy of the warranty is available on request.
 # Over time performance may vary between COLOBOND® steel and Interpon Powder Coatings due to the different paint technologies used.

PCS – Powder Coating Standard Colour. Products with a PCS code are manufactured to an agreed industry standard colour specification.